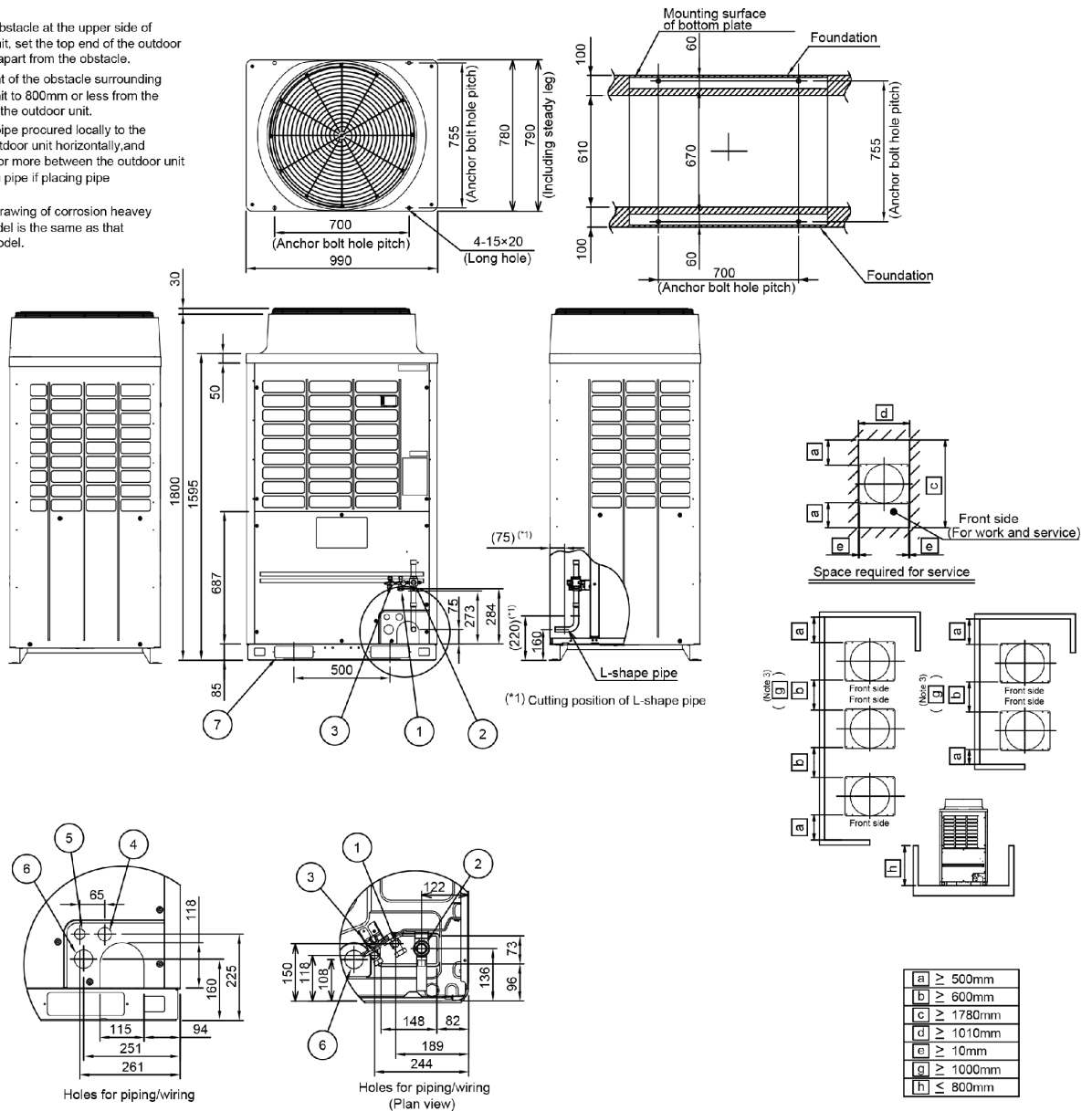




Dimensions - MMY-MAP0806HT8P-E, MMY-MAP1006HT8P-E, MMY-MAP1206HT8P-E

(Note)

1. If there is an obstacle at the upper side of the outdoor unit, set the top end of the outdoor unit 2000mm apart from the obstacle.
2. Limit the height of the obstacle surrounding the outdoor unit to 800mm or less from the bottom end of the outdoor unit.
3. Draw out the pipe procured locally to the front of the outdoor unit horizontally, and keep 500mm or more between the outdoor unit and traversing pipe if placing pipe transversely.
4. Dimensional drawing of corrosion heavy protection model is the same as that of standard model.



a	≥ 500mm
b	≥ 600mm
c	≥ 1780mm
d	≥ 1010mm
e	10mm
g	≥ 1000mm
h	≤ 800mm

Model Name	φ A	No	Parts name	Remarks
MAP0806 type	φ 19.1	①	Liquid pipe connection port	φ 12.7
MAP1006 type	φ 22.2	②	Gas pipe connection port	φ A
MAP1206 type	φ 28.6	③	Balance pipe connection port	φ 9.5
		④	Knockout hole for power wiring 1	φ 35
		⑤	Knockout hole for control wiring	φ 27
		⑥	Knockout hole for power wiring 2	φ 48
		⑦	Square hole (for freight handling)	2-60X200

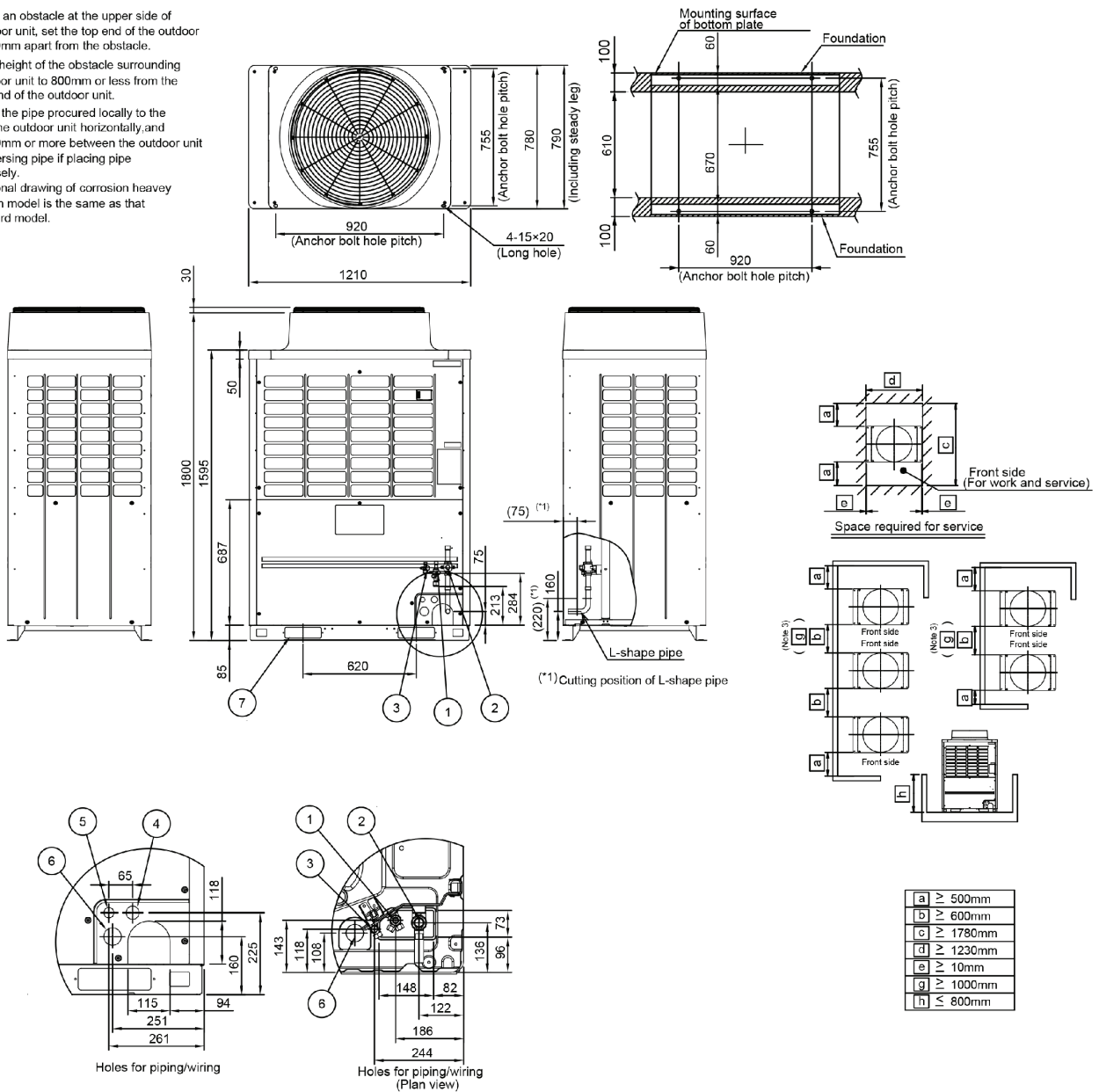
(Unit:mm)



Dimensions - MMY-MAP1406HT8P-E, MMY-MAP1606HT8P-E

(Note)

1. If there is an obstacle at the upper side of the outdoor unit, set the top end of the outdoor unit 2000mm apart from the obstacle.
2. Limit the height of the obstacle surrounding the outdoor unit to 800mm or less from the bottom end of the outdoor unit.
3. Draw out the pipe procured locally to the front of the outdoor unit horizontally, and keep 500mm or more between the outdoor unit and traversing pipe if placing pipe transversely.
4. Dimensional drawing of corrosion heavy protection model is the same as that of standard model.



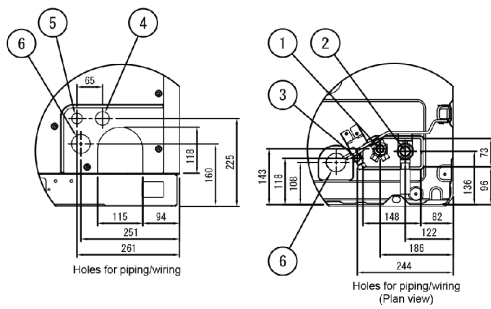
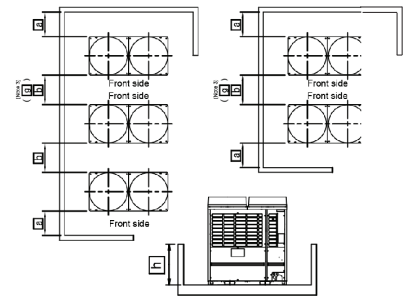
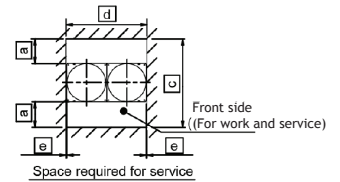
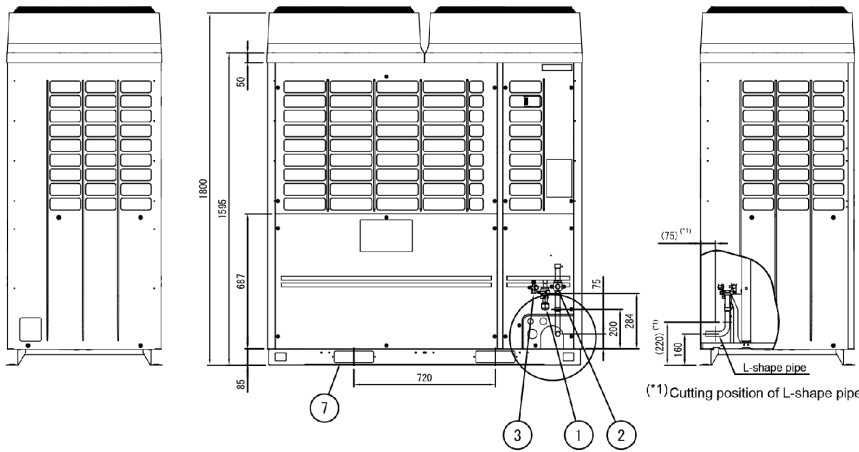
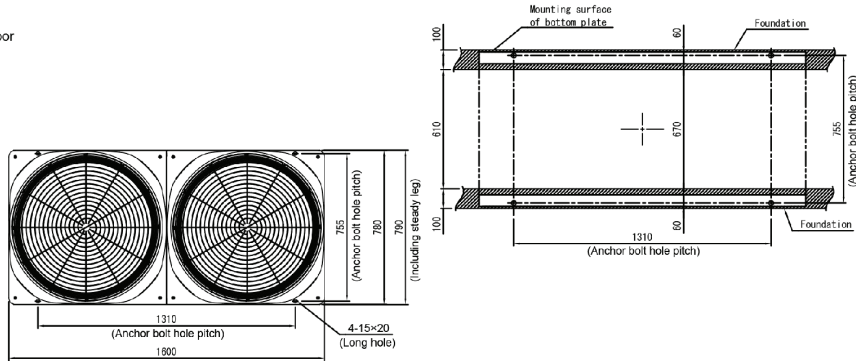
No.	Parts name	Remarks
①	Liquid pipe connection port	∅15.9
②	Gas pipe connection port	∅28.6
③	Balance pipe connection port	∅9.5
④	Knockout hole for power wiring 1	∅35
⑤	Knockout hole for control wiring	∅27
⑥	Knockout hole for power wiring 2	∅48
⑦	Square hole (for freight handling)	2-60X200 (Unit:mm)



Dimensions - MMY-MAP1806HT8P-E, MMY-MAP2006HT8P-E, MMY-MAP2206HT8P-E

(Note)

- If there is an obstacle at the upper side of the outdoor unit, set the top end of the outdoor unit 2000mm apart from the obstacle.
- Limit the height of the obstacle surrounding the outdoor unit to 800mm or less from the bottom end of the outdoor unit.
- Draw out the pipe procured locally to the front of the outdoor unit horizontally, and keep 500mm or more between the outdoor unit and traversing pipe if placing pipe transversely.
- Dimensional drawing of corrosion heavy protection model is the same as that of standard model.



a	≥ 500mm
b	≥ 600mm
c	≥ 1780mm
d	≥ 1230mm
e	≥ 10mm
g	≥ 1000mm
h	≤ 800mm

Model Name	φ A	No	Parts name	Remarks
MAP1806 type	φ15.9	①	Liquid pipe connection port	φA
MAP2006 type	φ15.9	②	Gas pipe connection port	φ28.6
MAP2206 type	φ19.1	③	Balance pipe connection port	φ9.5
		④	Knockout hole for power wiring 1	φ35
		⑤	Knockout hole for control wiring	φ27
		⑥	Knockout hole for power wiring 2	φ48
		⑦	Square hole (for freight handling)	2-60X200

(Unit:mm)