

# VRF Indoor Units

Toshiba VRF systems have a wide range of indoor units which enable designers and tenants to make the right product choice in terms of aesthetics and performance. 14 different type of units ranging from 0.8 to 10 hp are connectable to the VRF outdoor units. With the SMMSe and SHRMe range it is possible to install up to 64 different units individually-controlled or managed centrally with a wide range of Toshiba control solutions.

## High-wall and ceiling

A preferred solution for buildings where a false ceiling cannot be used. It is the perfect choice for those applications that need air conditioning in conjunction with the existing conventional radiator heating.

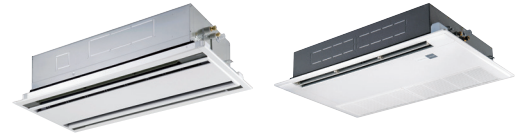
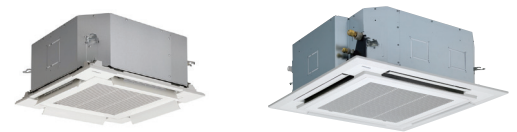


High-wall units in the VRF range adopt the similar high-end design of the units used in residential applications. These type of products are quiet, with personalised air flow control and indoor air quality filters.



## Cassettes

The cassette unit is the preferred solution for offices and buildings with false ceiling installations. The Toshiba range of cassette units is suitable for standard ceiling panels. The choice can be made between products with different air flow configurations: 1, 2, 4 air outlets. The 4-way cassettes feature a selectable automatic air flow pattern in speed and direction. The designer can also select other cassette types: compact 600 x 600 4-way, 1-way and the new slimmer 2-way cassette.



## Standard ducted

Large building applications make extensive use of ducts to deliver air to the different parts of the building. Toshiba designers have been able to create unit types with latest technology features in order to serve different purposes.



## Slim ducted

For applications where the space is limited in height and length (hotels).



## High-static ducted

For applications that require elevated external static pressure (open space).



## Concealed-chassis

Where the console is hidden behind a panel in order to be unobtrusive and blend perfectly in the interior.



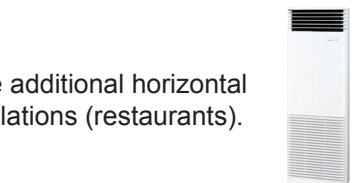
## Chassis cabinet

Positioned usually in place of radiators around the perimeter of the building or at the base of the building columns in the room.



## Floor-mounted console and bi-flow console

Typical installations where the indoor unit is placed on the floor against one wall or under a window sill.



## Floor-mounted cabinet

These are slim tall units that can be placed in different positions. These units feature the additional horizontal swing pattern (from left to right) which make them the preferred solution for corner installations (restaurants).



## Fresh air intake

To manage the distribution of fresh air throughout the ductwork of a building (SMMSe only maximum 30% capacity).

## Heat exchangers (DX type)

To treat the incoming fresh air and use the benefit of free cooling process.

# VRF



## VRF Indoor Unit Overview

Nominal Cooling Capacity	kW	1.7	2.2	2.8	3.6	4.5	5.6
Nominal Heating Capacity	kW	1.9	2.5	3.2	4.0	5.0	6.3
	hp	0.6	0.8	1	1.25	1.7	2

Indoor Unit Type	Model Ref	MMU-AP0057MH-E	MMU-AP0077MH-E	MMU-AP0097MH-E	MMU-AP0127MH-E	MMU-AP0157MH-E	MMU-AP0187MH-E	
Cassette Indoor Units	 <b>4-Way Compact Cassette</b> Full Spec Page 176	Model Ref	MMU-AP0057MH-E	MMU-AP0077MH-E	MMU-AP0097MH-E	MMU-AP0127MH-E	MMU-AP0157MH-E	MMU-AP0187MH-E
	 <b>4-Way Cassette</b> Full Spec Page 177	Model Ref			MMU-AP0094HP1-E	MMU-AP0124HP1-E	MMU-AP0154HP1-E	MMU-AP0184HP1-E
	 <b>2-Way Cassette</b> Full Spec Page 178	Model Ref		MMU-AP0072WH1	MMU-AP0092WH1	MMU-AP0122WH1	MMU-AP0152WH1	MMU-AP0182WH1
	 <b>1-Way Cassette</b> Full Spec Page 179	Model Ref		MMU-AP0074YH1-E	MMU-AP0094YH1-E	MMU-AP0124YH1-E	MMU-AP0154SH1-E	MMU-AP0184SH1-E
Ducted Type	 <b>Slim Ducted</b> Full Spec Page 180	Model Ref	MMD-AP0056SPH1-E	MMD-AP0074SPH1-E	MMD-AP0094SPH1-E	MMD-AP0124SPH1-E	MMD-AP0154SPH1-E	MMD-AP0184SPH1-E
	 <b>Standard Ducted</b> Full Spec Page 181	Model Ref		MMD-AP0076BHP1-E	MMD-AP0096BHP1-E	MMD-AP0126BHP1-E	MMD-AP0156BHP1-E	MMD-AP0186BHP1-E
	 <b>High-Static Ducted</b> Full Spec Page 182	Model Ref						MMD-AP0186HP1-E
Ceiling Type	 <b>Ceiling-Suspended</b> Full Spec Page 184	Model Ref				MMC-AP0158HP-E	MMC-AP0188HP-E	
Wall-Mounted	 <b>High-Wall 3 Series</b>  <b>High-Wall 4 Series</b> Full Spec Page 174	Model Ref	MMK-AP0054MHP1-E	MMK-AP0073H1 MMK-AP0074MH1-E	MMK-AP0093H1 MMK-AP0094MH1-E	MMK-AP0123H1 MMK-AP0124MH1-E	MMK-AP0153H1	MMK-AP0183H1
	 <b>High-Wall 7 Series</b> Full Spec Page 175	Model Ref	AP0057HP-E	AP0077HP-E	AP0097HP-E	AP0127HP-E	AP0157HP-E	AP0187HP-E
Floor-Standing Type	 <b>Concealed-Chassis</b> Full Spec Page 185	Model Ref		MML-AP0074BH1-E	MML-AP0094BH1-E	MML-AP0124BH1-E	MML-AP0154BH1-E	MML-AP0184BH1-E
	 <b>Floor-Mounted Console</b> Full Spec Page 185	Model Ref		MML-AP0074H1-E	MML-AP0094H1-E	MML-AP0124H1-E	MML-AP0154H1-E	MML-AP0184H1-E
	 <b>Bi-Flow Console</b> Full Spec Page 186	Model Ref		MML-AP0074NH1-E	MML-AP0094NH1-E	MML-AP0124NH1-E	MML-AP0154NH1-E	MML-AP0184NH1-E
	 <b>Floor-Mounted Cabinet</b> Full Spec Page 187	Model Ref					MMF-AP0156H1-E	MMF-AP0186H1-E
Air Movement	 <b>Fresh Air Intake Unit</b> Full Spec Page 188	Model Ref						
	 <b>Air-to-Air with DX Coil Type</b> Full Spec Page 215	Model Ref				MMD-VN502HEX1E	MMD-VN802HEX1E	
	 <b>Air-to-Air with DX Coil and Humidifier Type</b> Full Spec Page 216	Model Ref				MMD-VNK502HEX1E	MMD-VNK802HEX1E	
Heating	 <b>Hot Water Module (SMMSe/SHRMe)</b> Full Spec Page 189	Model Ref						



# VRF



## VRF Indoor Unit Overview (continued)

7.1	8.0	9.0	11.2	14.0	16.0	22.4	28.0
8.0	9.0	10.0	12.5	16.0	18.0	25.0	31.5
2.5	3	3.2	4	5	6	8	10

MMU-AP0244HP1-E	MMU-AP0274HP1-E	MMU-AP0304HP1-E	MMU-AP0364HP1-E	MMU-AP0484HP1-E	MMU-AP0564HP1-E		
MMU-AP0242WH1	MMU-AP0272WH1	MMU-AP0302WH1	MMU-AP0362WH1	MMU-AP0482WH1	MMU-AP0562WH1		
MMU-AP0244SH1-E							
MMD-AP0244SPH1-E	MMD-AP0274SPH1-E						
MMD-AP0246BHP1-E	MMD-AP0276BHP1-E	MMD-AP0306BHP1-E	MMD-AP0366BHP1-E	MMD-AP0486BHP1-E	MMD-AP0566BHP1-E		
MMD-AP0246HP1-E	MMD-AP0276HP1-E		MMD-AP0366HP1-E	MMD-AP0486HP1-E	MMD-AP0566HP1-E	MMD-AP0726HP-E	MMD-AP0966HP-E
MMC-AP0248HP-E	MMC-AP0278HP-E		MMC-AP0368HP-E	MMC-AP0488HP-E	MMC-AP0568HP-E		
MMK-AP0243H1							
AP0247HP-E							
MML-AP0244BH1-E							
MML-AP0244H1-E							
MMF-AP0246H1-E	MMF-AP0276H1-E		MMF-AP0366H1-E	MMF-AP0486H1-E	MMF-AP0566H1-E		
				MMD-AP0481HFE		MMD-AP0721HFE	MMD-AP0961HFE
	MMD-VN1002HEX1E						
	MMD-VNK1002HEX1E						
MMW-AP0271LQ-E				MMW-AP0561LQ-E			